

Lettuce Fusarium Wilt Trials Field Day

(3 trials: variety, steam, fungicide)

Tuesday, August 26, 2025

10 am-12 pm

Register here!



<https://surveys.ucanr.edu/survey.cfm?surveynumber=46776>



Location

36.4467400, -121.3621331 (See the map on the next page.)

Registration starts at 9:30 AM.

Welcome and trial overview at 10:00 and 11:00 AM.

Disease severity is low to moderate overall.

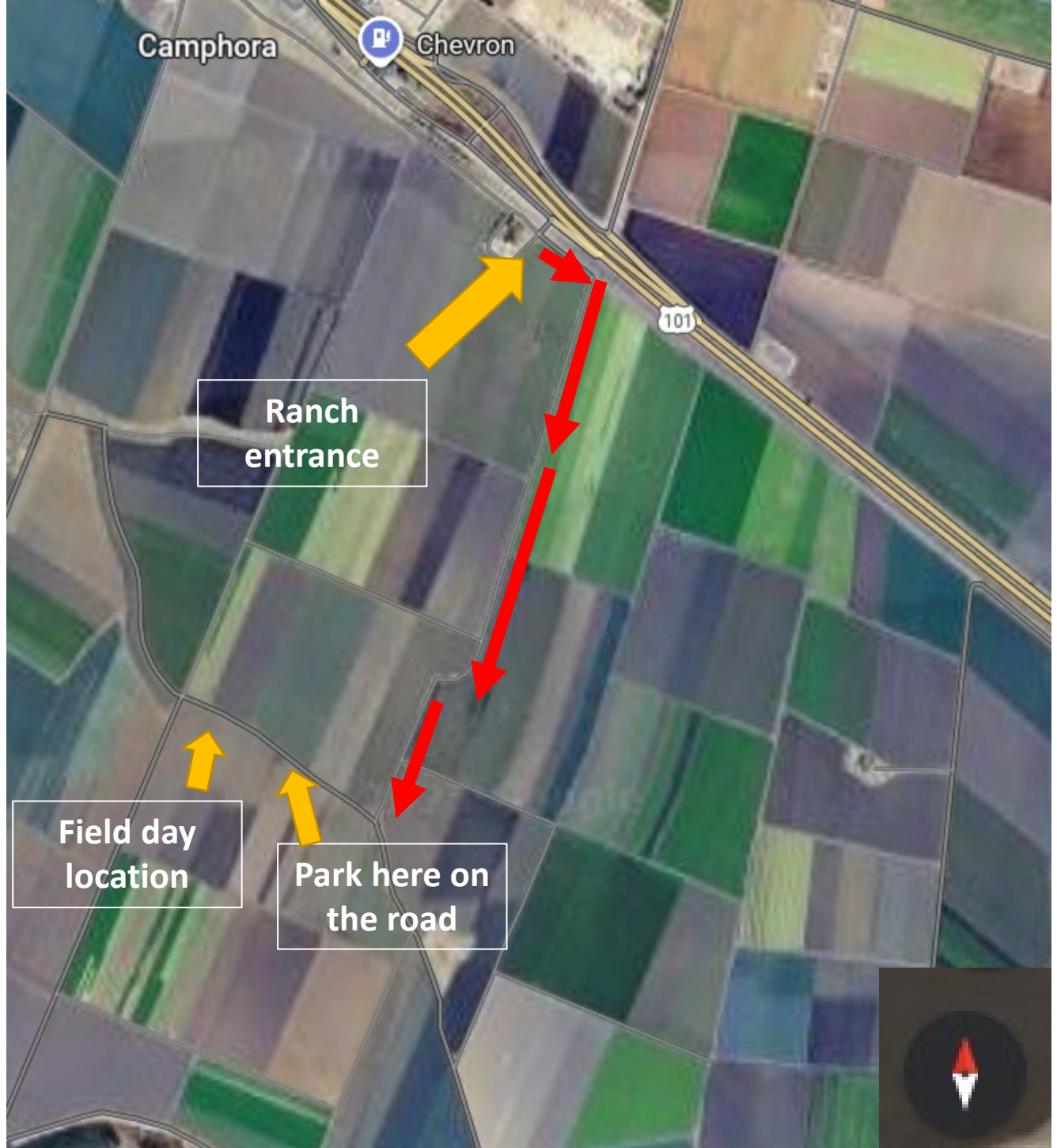


Thank you Huntington Farms, California Leafy Greens Research Board and CDFA for supporting the trials!

UNIVERSITY OF CALIFORNIA
Agriculture and Natural Resources

UC Cooperative Extension





Take exit 305 and continue on Silliman Rd to the ranch entrance. Follow the red arrows to get to the site. There are UCCE field day signs to follow.

Questions? Contact

Yu-Chen Wang
yckwang@ucanr.edu
831-201-9689

Alex Putman
aiputman@ucr.edu

Chris Greer
cagreer@ucanr.edu