

# 2026 STATE FASHION REVUE CATEGORIES

## TRADITIONAL

Participants in this category will construct a garment/s and assemble an outfit that showcases their sewing skills and ability to coordinate an outfit. The outfit must contain at least one constructed garment. Participants are encouraged to construct additional garments to complete the outfit but may wear clothing they purchased or already own. Accessories - such as shoes, hats, belts, jewelry, purses, backpacks, etc., - may be purchased, already owned, or made by the member. If items were sewn that cannot be worn - such as in a coordinating jacket, skirt, and pants set or in a pajama set with matching pillow or quilt - these additional items may be carried. Only garments sewn by the participant will be evaluated on construction, but all items worn will be evaluated on the outfit coordination.

You may enter a Make It With Wool outfit in the Traditional category. If you choose to enter the Make It With Wool competition that is supported by the American Sheep Industry, it is your responsibility to ensure that your entry meets the Make It With Wool requirements. (<https://makeitwithwool.com/welcome>)

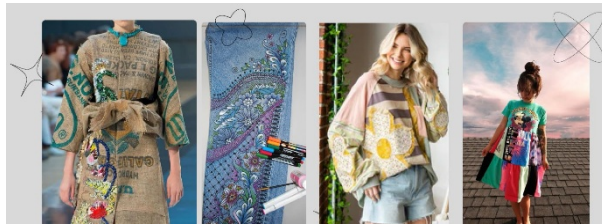
The garment/s in this category must be sewn by the member as part of a 4-H Clothing & Textiles Project\* and modeled by the member at the Fashion Revue event. Participant must have received County Winner at a County 4-H Fashion Revue or other qualifying event to enter at State Fashion Revue.

## CONSUMER SCIENCE PURCHASED, \$50.00 LIMIT

Participants in this category will shop for an entire outfit with the total cost not to exceed \$50.00 not including sales tax. **Receipts from the current 4-H year are required for any item that is visible.** This includes but is not limited to shoes, stockings, jewelry, and hair

accessories. Gifts, prior purchases, and items without receipts are not eligible for this category. Receipts from yard sales, etc. may be handwritten. The participant should consider value vs. cost, versatility, the shopping experience, and coordination of the outfit within the cost limit. Participants may alter a garment to improve its fit, but it must retain its original condition.

This category has no 4-H project requirement and must be modeled by the member at the Fashion Revue event. Participant must have received County Winner at a County 4-H Fashion Revue or other qualifying event to enter at State Fashion Revue.



## UNIQUELY UPCYCLED

Upcycling is the process of taking discarded or unused materials and transforming them into new products of better quality or value. In the context of fashion, upcycling involves repurposing old clothing or textiles to extend their lifespan and create new and unique garments. You can alter the items through sewing, cutting and reshaping, embellishing, dyeing, embroidery, applique, painting, beading, etc. Examples: combining sleeves from one garment to the bodice of another item or using fabric from an old tablecloth to create a skirt.

The garment/s in this category must be sewn by the member as part of a 4-H Clothing & Textiles Project\* and modeled by the member at the Fashion Revue event. Participant must have received County Winner at a County 4-H Fashion Revue or other qualifying event to enter at State Fashion Revue.

## PANTONE COLOR OF THE YEAR 2025 CHALLENGE

Participants in this challenge will create an outfit that uses the Pantone Color of the Year 2025: Mocha Mousse, a warming, soft brown that evokes comfort, thoughtfulness, and simple pleasures. It reflects a desire for ease and coziness and to nourish ourselves with life's simple pleasures, whether it's a quiet moment with a cup of tea or a peaceful walk in nature. Additional colors may be used to enhance the outfit. The outfit must feature at least one handmade garment made by the member.

The garment/s in this category must be sewn by the member as part of a 4-H Clothing & Textiles Project\* and modeled by the member at the Fashion Revue event.



**PANTONE®**  
17-1230 TCX  
Mocha Mousse

## COSTUME CHALLENGE

Participants in this category will create a costume for themselves or another person using any technique, materials, or pattern. It does not need to be sewn from fabric. The costume can be any theme and from any time, place, or country as long as it is 4-H appropriate. 70% of the costume must be handmade by the member; 30% can be handmade or purchased. The member must be able to move comfortably in the costume - sit, stand, walk, and go up and down stairs.

This category has no 4-H project requirement. If it was sewn for the member, they must model it. If it was sewn for another person, that person may model it, or it may be shown on a hanger. The member must be present and participate at the Fashion Revue event if it was sewn for another person.

## SOFTIE CHALLENGE

What is a softie? A stuffed animal, cloth doll, plush toy, soft sculpture, or fabric toy. In this challenge, the participant will sew, felt, knit, or crochet a softie using a pattern or their own design. Any type of fabric and any embellishment techniques (trims, embroidery, yarn hair, removeable clothing) may be used. Participants must present the entry themselves at the Fashion Revue event.

This category has no 4-H project requirement and must be presented by the member at the Fashion Revue event.



## NEEDLEWORK

Participants in this category will create any type of needlework – embroidery, cross stitch, needlepoint, quilting, knitting, crochet, etc. You may use a kit. Participants must present the entry themselves at the Fashion Revue event.

The item/s in this category must be sewn by the member as part of a 4-H Clothing & Textiles Project\* and presented by the member at the Fashion Revue event.



*\*4-H Clothing and Textiles projects include Sewing, Fiber Arts, Crocheting, Knitting, and Quilting.*

## WHO CAN ENTER 2026 STATE FASHION REVUE?

- Any 4-H Member who meets the requirements for the specific category.

## WHAT DO I NEED TO KNOW TO ENTER 2026 STATE FASHION REVUE?

Traditional, Consumer Science Purchased, \$50.00 Limit, and Uniquely Upcycled entries must have received County Winner at a County 4-H Fashion Revue or other qualifying event. Only one County Winner from each age division in these three categories may enter State Fashion Revue.

Pantone Color of the Year 2025 Challenge, Costume Challenge, Softie Challenge, and Needlework categories do not need to qualify at a County 4-H Fashion Revue or other qualifying event to enter these categories at State Fashion Revue.

Age Divisions (Age as of 12/31/25)

Junior, ages 9-10

Intermediate, ages 11-13

Senior, ages 14-18

Members may enter two categories at State Fashion Revue.

The two highest point score winners in Senior Traditional, Senior Consumer Science Purchased, and Senior Uniquely Upcycled will qualify for the FCS National Championship & Conference Fashion Revue categories.

All outfits must meet the 4-H Dress Guidelines:

<https://ucdavis.app.box.com/s/0golrvsmai84h241w39h1fkojma84qnb>

For more information, please email Stephanie Barrett at [sbarrett@ucanr.edu](mailto:sbarrett@ucanr.edu).



UNIVERSITY OF CALIFORNIA  
Agriculture and Natural Resources

4-H Youth Development Program

# 2026

## STATE FASHION REVUE



The University of California Agriculture and Natural Resources (UC ANR) is an equal opportunity provider. (Complete nondiscrimination statement can be found at: [https://ucanr.edu/sites/default/files/2025-06/2025\\_ANR\\_NonDiscriminationStatement.pdf](https://ucanr.edu/sites/default/files/2025-06/2025_ANR_NonDiscriminationStatement.pdf))  
Inquiries regarding ANR's nondiscrimination policies may be directed to UC ANR, Civil Rights Compliance Officer, University of California Agriculture and Natural Resources, 2801 Second Street, Davis, CA 95618, (530) 750-1280.